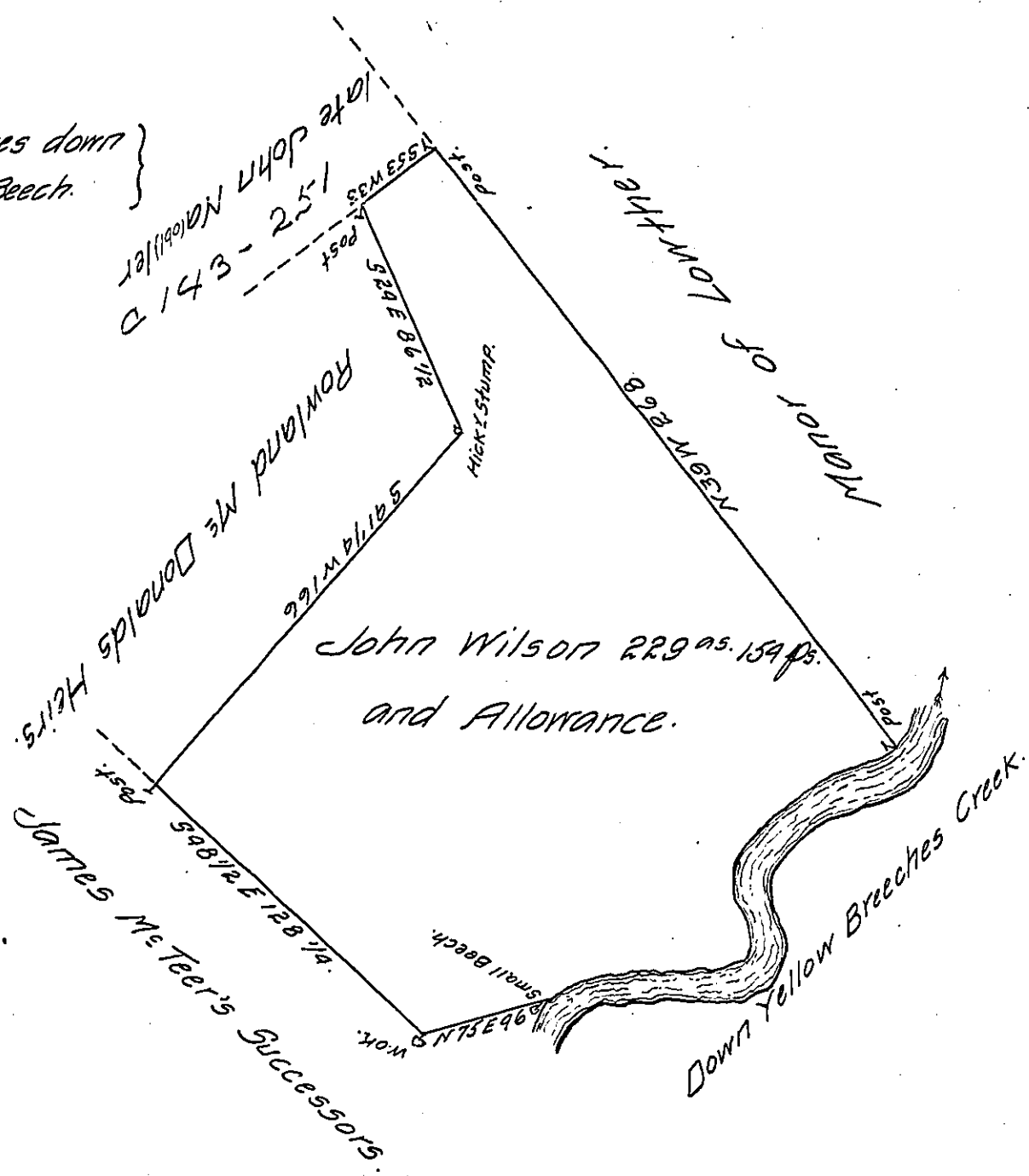


Courses and Distances down
the Creek from the Beech.

- N 65 E 12 1/2
 - N 81 E 69
 - N 23 W 17
 - N 7 E 12 1/4
 - N 91 E 45
 - N 67 E 14
 - N 71 E 18
- to the Post
-
- 182 3/4



The Draught of a Tract of Land Situate in Allen Town-
 ship Cumberland County Containing Two Hundred and Twenty
 nine Acres and 154 Perches and Allowance of Six p Cent.
 for Roads &c. Surveyed June 13th 1796 in pursuance of a
 Warrant granted to John Wilson Dated April 17th 1766.

By Sam^l Lyon D.S.
 To Daniel Brodhead Esquire
 Surveyor General of Pennsylvania

IN TESTIMONY that the above is a copy of the original remaining on file in
 the Department of Internal Affairs of Pennsylvania, made
 comformably to an Act of Assembly approved the 16th day of
 February 1833, I have hereunto set my hand and caused
 the Seal of said Department to be affixed at Harrisburg,
 this twenty first day of May 1907.

Henry Houck
 Secretary of Internal Affairs.